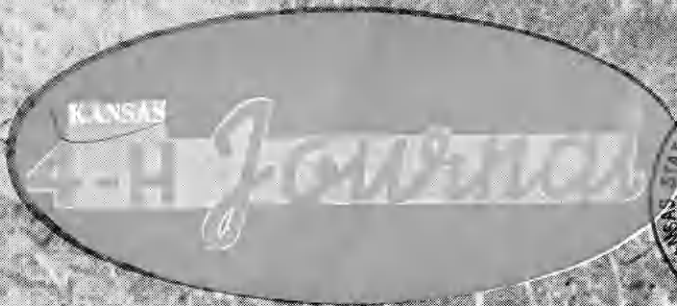


37



April  
~~MARCH~~, 1960



Cover of 4-H page

# Kansas 4-H Journal Sponsors

The firms listed below make it possible for you to get the Kansas 4-H Journal each month. If you enjoy the Journal, 4-H members, leaders and parents should express their appreciation to the sponsors in their respective county.

A list of Kansas 4-H Journal sponsors for McPherson through Wyandotte counties will be carried in the May, 1960, Kansas 4-H Journal. Look for it.

- Allen**  
Allen County State Bank, Iola
- Anderson**  
Garnett State Savings Bank, Garnett
- Atchison**  
Blair Milling & Elevator Co., Inc., Atchison  
George W. Kerford Quarry Company, Atchison  
Pillsbury Company, Feed Division, Atchison  
Sunflower Tip Top Dairies Company, Valley Falls  
Walsner & Shelper Ladies Ready-To-Wear, Atchison
- Barber**  
The First National Bank, Medicine Lodge
- Barton**  
The First National Bank, Great Bend
- Bourbon**  
Citizens National Bank, Ft. Scott  
Liberty Savings and Loan Association, Ft. Scott  
National Farm Loan Association, Ft. Scott  
The Bank of Bronson, Bronson  
Union State Bank, Uniontown
- Brown**  
Bank of Robinson, Robinson  
Citizens State Bank, Hiawatha  
Farmers State Bank, Fairview  
Home State Bank, Horton  
The Bank of Horton, Horton  
The Morrill & Jones Bank, Hiawatha  
The Morrill State Bank, Morrill  
The Union State Bank, Everest
- Butler**  
Andover State Bank, Andover  
Augusta State Bank, Augusta  
Bank of Whitewater, Whitewater  
Benton State Bank, Benton  
Citizens State Bank of El Dorado, El Dorado  
El Dorado National Bank, El Dorado  
Exchange State Bank, Douglass  
Mid-Continent Federal Savings and Loan Association, El Dorado  
The Potwin State Bank, Potwin  
The Prairie State Bank, Augusta  
The Rose Hill State Bank, Rose Hill  
The State Bank of Leon, Leon  
Walnut Valley State Bank, El Dorado
- Chase**  
Exchange National Bank, Cottonwood Falls  
Peoples Exchange Bank, Elmdale  
Strong City State Bank, Strong City
- Chautauqua**  
The Sedan State Bank, Sedan
- Cherokee**  
American National Bank, Baxter Springs  
Baxter State Bank, Baxter Springs  
Citizens Bank of Weir, Weir City  
Columbus State Bank, Columbus  
First National Bank of Columbus, Columbus
- Cheyenne**  
Citizens State Bank, St. Francis
- Clark**  
Citizens State Bank, Ashland  
Peoples State Bank, Minneola  
Stockgrowers State Bank, Ashland
- Clay**  
Union State Bank, Clay Center
- Cloud**  
Citizens State Bank, Miltonvale  
First National Bank, Glasco  
Jamestown State Bank, Jamestown
- Coffey**  
Peoples National Bank, Burlington
- Comanche**  
Peoples State Bank, Coldwater
- Cowley**  
The First National Bank, Winfield  
The Home National Bank of Arkansas City, Arkansas City
- Crawford**  
Farmers State Bank, Walnut  
First National Bank, Girard  
First State Bank, Arma  
First State Bank of Pittsburg, Pittsburg
- Girard National Bank, Girard**  
Hepler State Bank, Hepler  
Home State Bank, Arcadia  
McCune State Bank, McCune  
Miners State Bank, Frontenac  
National Bank of Pittsburg, Pittsburg
- Decatur**  
Decatur Co-op Association, Oberlin
- Dickinson**  
Farmers National Bank, Abilene
- Doniphan**  
Doniphan County Electric Co-op Association, Inc., Troy
- Douglas**  
Coles's—Hillcrest—Rusty's IGA Food-liners, Lawrence  
Farmers Co-op Association, Lawrence  
The Fritz Company, Lawrence
- Edwards**  
Home State Bank, Lewis
- Eik**  
Exchange State Bank, Moline  
First National Bank, Howard  
Home State Bank, Longton  
Howard National Bank, Howard
- Ellis**  
Ellis State Bank, Ellis  
Farmers National Bank, Victoria  
Farmers State Bank, Hays  
First National Bank, Hays
- Ellsworth**  
Bank of Holyrood, Holyrood  
Citizens State Bank, Ellsworth  
Kanopolis State Bank, Kanopolis  
Wilson State Bank, Wilson
- Finney**  
Fidelity State Bank, Garden City  
Garden National Bank, Garden City
- Ford**  
Bucklin State Bank, Bucklin  
Farmers State Bank, Bucklin  
Fidelity State Bank, Dodge City  
First National Bank, Dodge City  
Ford County State Bank, Spearville
- Franklin**  
Peoples National Bank, Ottawa  
The Wellsville Bank, Wellsville
- Geary**  
Central National Bank, Junction City  
First National Bank, Junction City
- Gove**  
First National Bank, Quinter  
Peoples State Bank, Grinnell  
The Citizens State Bank, Grainfield
- Graham**  
Farmers & Merchants Bank, Hill City
- Grant**  
The Grant County State Bank, Ulysses
- Gray**  
Farmers State Bank, Ingalls  
First National Bank in Cimarron, Cimarron  
The Montezuma State Bank, Montezuma
- Greeley**  
First National Bank, Tribune
- Greenwood**  
C. K. Rawlings Insurance, Eureka  
Citizens National Bank, Eureka  
Eureka Federal Savings and Loan Association, Eureka  
Hartong's, Inc., Eureka  
Home National Bank, Eureka  
McManis Implement Company, Eureka  
Race Parks Oil Company, Eureka  
The A. C. Houston Lumber Company, Eureka
- Hamilton**  
First National Bank, Syracuse  
The Valley State Bank, Syracuse
- Harper**  
Anthony Farmers Co-operative Elevator, Anthony  
Danville Co-op Association, Danville  
Farmers Co-op Business Association, Corwin  
Shook Farmers Co-op Grain and Mercantile Union, Anthony  
State Line Grain Company, Manchester, Oklahoma
- Harvey**  
Harvey County Bankers Association
- Haskell**  
Haskell County State Bank, Sublette
- Hodgeman**  
Farmers State Bank, Jetmore  
Hanston State Bank, Hanston
- Jackson**  
Alley-Duffy's IGA Foodliner, Holton  
Cox Implement Company, Holton  
Dannenberg Implement Company, Holton  
Eubanks Implement Company, Holton  
Farmers Union Co-op. Association, Holton  
Holton Lumber Company, Holton  
Lueck Grain Company, Netawaka  
Sock & Fern Freese, Holton  
Symons Truck and Tractor, Holton  
Western Auto Associate Store, Holton
- Jefferson**  
Jefferson County Home Demonstration Units  
Leavenworth-Jefferson Electric Cooperative, McLouth  
Roy Baker Quarry, Valley Falls  
Sunflower Tip Top Dairies Company, Valley Falls
- Jewell**  
First National Bank, Formoso  
First National Bank in Mankato, Mankato  
The Burr Oak State Bank, Burr Oak  
The Citizens State Bank, Jewell  
The Randall National Bank, Randall  
The State Bank of Esbon, Esbon  
The State Exchange Bank, Mankato
- Johnson**  
Johnson County Bankers Association
- Kearny**  
Farmers Co-operative, Lakin and Kendall
- Kingman**  
C. R. Calvert Company, Kingman
- Kiowa**  
First State Bank, Mullinville  
Greensburg State Bank, Greensburg  
Haviland State Bank, Haviland
- Labette**  
American State Bank, Oswego  
Chetopa State Bank, Chetopa  
First National Bank, Edna  
First National Bank, Oswego  
First National Bank, Parsons  
Labette County State Bank, Altamont  
Parsons Commercial Bank, Parsons  
State Bank of Parsons, Parsons
- Lane**  
First National Bank, Dighton  
First State Bank, Healy
- Leavenworth**  
First National Bank, Leavenworth
- Lincoln**  
Sylvan State Bank, Sylvan Grove
- Linn**  
Bank of Pleasanton, Pleasanton  
Centerville State Bank, Centerville  
Farmers and Merchants Bank, Mound City  
Farmers State Bank, Blue Mound  
First National Bank, Pleasanton  
Linn County Bank, LaCygne  
Parker State Bank, Parker  
Prescott State Bank, Prescott
- Logan**  
Farmers State Bank, Oakley  
Farmers State Bank, Winona
- Lyon**  
Citizens National Bank, Emporia
- Marion**  
Tip Top Dairies, Hillsboro
- Marshall**  
Citizens State Bank, Marysville  
Citizens State Bank, Waterville  
Exchange Bank of Schmidt & Koester, Marysville  
First National Bank, Beattie  
First National Bank, Summerfield  
First National Bank, in Frankfort, Frankfort  
Oketo State Bank, Oketo  
The Bremen State Bank, Bremen  
The Irving State Bank, Irving  
The State Bank of Axtell, Axtell  
The State Bank of Blue Rapids, Blue Rapids  
Vermillion State Bank, Vermillion



## Letters

If you have ideas or 4-H Club experiences that you would like to write about or if there is something you like or dislike about the Kansas 4-H Journal, write to the Editor, Kansas 4-H Journal, Manhattan, Kansas.  
Leaders, parents, members, agents and 4-H friends are invited to write.

### Journal Promotes 4-H

Dear Editor:

Your magazine is enjoyed by all Clark county 4-H families and it is doing much to give them new ideas. This is one of the reasons Clark county is showing an increase in enrollment over past years. Keep up the good work.

Don K. Wiles  
Clark County  
Agricultural Agent

### Don't Lower Junior Leadership Age

Dear Editor:

I don't believe the age restriction for junior leadership should be lowered. I don't believe the average younger member has developed the abilities of leadership, initiative and perseverance required to carry on a successful program of junior leadership.

It has been my experience the younger member taking junior leadership for the first time sometimes requires a measure of encouragement, supervision and constant reminders.

Unless the member actually does junior leadership work. I

don't see he gains anything by taking that project.

Our club has been in existence for 35 years this year. I wonder how many other Kansas clubs have been in continuous existence for that long?

Lee Peterson, Humboldt Club  
Geary County

Dear Editor:

Based around all living things there is a standard goal which brings forth the inspiration to carry on day after day.

Stepping stones must have a foundation; a good foundation must support a good structure.

It is righteous to be aggressive

and progressive but not beyond first planning the stepping stone, the foundation and the structure very securely.

Over aggressiveness or progressiveness generally leads to destruction.

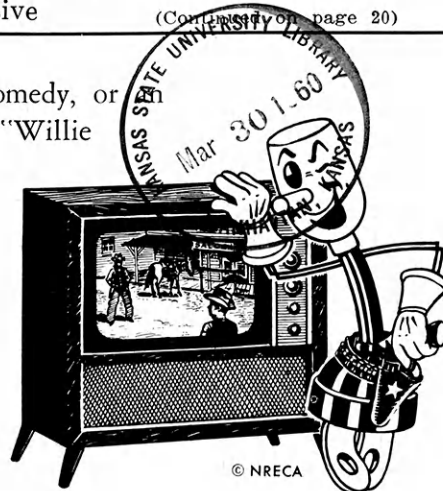
The most wonderful gift God could give us is our children to love, to guide, to build, to carry on in this world. They will be our leaders of tomorrow.

To me, junior leadership is a very important foundation supported by several years of sturdy stepping stones (years of 4-H Club work).

(Continued on page 20)

Whether it be westerns, comedy, or educational program, "Willie Wiredhand" brings entertainment to you in your living room.

Television is just one of the many benefits of rural electrification to the farmer.



© NRECA



**Kansas Electric  
Cooperatives, Inc.**

420 W. 9th

Topeka, Kansas

## Kansas 4-H Journal

VOL. VI, No. 4

April, 1960

Date April.....Editor

### Editorial and Business Office

Phone JE 9-2211 Ext. 208  
Manhattan, Kansas

Published Monthly By

**KANSAS 4-H FOUNDATION, INC.**

J. Harold Johnson.....Executive Director

### BOARD OF TRUSTEES

W. Dale Critser, Chrm.....Wichita  
Clifford Hope, Vice Chrm.....Garden City  
R. B. Christy.....Scott City  
Harry Darby.....Kansas City  
W. Laird Dean.....Topeka  
A. D. Jellison.....Junction City  
Harold E. Jones.....Manhattan  
George B. Powers.....Wichita  
Roger E. Regnier.....Manhattan  
E. B. Shawver.....Wichita  
Fred D. Wilson.....Andover

Entered at the postoffice in Lawrence, Kansas, as second-class matter under the Act of March 3rd, 1879.

Advertising rates and circulation data on request.

Group subscriptions \$1.00 per year.  
Individual subscription \$1.50 per year.  
Single copy 15 cents.

Use of the 4-H name and symbol approved by the Secretary of Agriculture of the United States, January 23, 1951, under the provisions of the law as reenacted by Sec. 707 of the Act of June 25, 1948 Public Law No. 772, 80th Congress (10 USC 797)



**KANSAS COOPERATIVES  
ARE YOU... JOINING AND HELPING  
TO CONTROL A COOPERATIVE IS YOUR  
BEST INVESTMENT IN YOUR FUTURE.**

**KANSAS COOPERATIVE COUNCIL**

701 Jackson — Topeka

**FARMERS**  
LOW-COST  
Complete Protection  
Policy

**FIRE &  
AUTO**

**INSURANCE**  
write to  
**ALLIANCE COMPANIES**  
McPherson, Kansas  
Name.....  
Address.....

SERVING KANSAS SINCE 1888

# Dining Hall Funds Increase, Hope For Increased Impetus

L. C. Williams Dining Hall quotas have been met by 36 of the 105 counties. Substantial progress has been made by a number of other counties.

Harold E. Jones, Kansas Extension Director, expresses the hope quotas may be completed soon—see the story at right.

Here is how the money has been or is being raised in three counties. You may be able to use some of these ideas in your county. For a progress report on the Dining Hall program, see the chart at lower right.

## Wyandotte County

"When the dining hall was first discussed in our council meeting," Wyandotte county 4-H agent Bill Borst said, "everyone accepted the idea that if outsiders were going to do most of the rest of the building, it was not too much to expect the 4-H'ers to build the dining hall.

"After that, it didn't take long to develop the idea and

there was no trouble raising our \$1800 goal."

Mrs. Clyde Piper of the Grin-ter Go Getters Club in Wyandotte county said, "Each club was to furnish \$1 per member for three years. The council was to make up the difference.

"The first year we collected 50 cents from each member and sold candy for the rest.

"The second year we sold enough candy to make our \$45. In 1959 we received the money as an award from the S. W. Bell Telephone Company for having the best group activity in the county."

Marvin Fuller, 4-H township representative and Clyde Roberts, a 4-H member, evolved the plan for raising the money, Borst said.

While the entire county quota has been raised, the Horanif Hustlers, Mrs. Orval Smith, leader, has set as their goal to get 35 seals for their Foundation certificate—one for each year of membership.

"The children decided we'd go ahead and keep up our membership," Mrs. Smith said. "The older members got to looking at the membership certificate and decided they'd like to try to get all of the stickers to put on our certificate.

"We're just taking it for granted we'll be in existence that long and will be able to do it every year.

"Actually once we started raising the money, it was very simple. The youngsters just assumed it was the thing to do and they went ahead and raised it," Mrs. Smith concluded.

Bake sales accounted for most of the money raised by the Horanif club.

## Jefferson County

Jefferson county has raised \$2,592 of their \$3,060 quota. For two years the council voted to match contributions from the individual clubs, giving credit to the club for the full amount.

This raised a total of \$1800.

In 1950 the council gave \$750 raised by the clubs at a county-wide carnival. "The carnival creates more interest in 4-H," Roy Freer, Boyle Boosters Club leader said.

Another leader, John Hamon of the Prosperity Club, says, "Our 4-H carnival gives members an opportunity to contribute time and resources to aid the program. It gives everyone an equal chance to help."

Mrs. Willard McPherson, another leader, says, "All work and no play makes Jack and many 4-H'ers dull. Thus, the 4-H carnival adds a spark of life to the county 4-H program."

"The carnival is one of the easiest ways to raise money," comments Jefferson county home economics agent Ardella Rusk. "We start Saturday morning to put up the booths and its all over that night."

## Franklin County

Two clubs from Franklin county sent in reports on their

To raise their share of Wyandotte county's quota for the Rock Springs Ranch dining hall, members, leaders, and parents of the Hazel Grove Club served 3,500 people at an open house for a new telephone company building. Members made 125 dozen cookies, purchased an additional 300 dozen and poured 70 gallons of punch.





Dining Hall money raising projects. The Full-O-Pep Club had a box and pie supper. Club members and parents presented entertainment numbers before the auction.

The Junior Judges assisted the Harmony House HDU serve dinner at a district lamb and wool show in Ottawa as their project. The two groups served 130 people.

## Cover Story

The cover picture shows members of the Advance Club, Wyandotte county, gleaning corn on the farm of leader E. R. Theno as one of their money raising projects for the Rock Springs Ranch dining hall. The Photo was taken by Kansas City Kansan photographer Bob Snair.



Above, Woodson county council president Diana Pringle and secretary Joan Rodman, prepare a check for \$500 to be applied to the county quota for the Rock Springs Ranch Dining Hall. Below, a talent show and box supper was used as a money raising project (money going to the Rock Springs Dining Hall) by the Full-O-Pep Club, Franklin county.



# Urgent Need To Finish Quotas

By Harold E. Jones, Director  
Kansas Extension Service

The delay in constructing the L. C. Williams Dining Hall at Rock Springs limits use of the 4-H Center by 4-H camp groups to 1/2 the Center's capacity.

It also prevents use of the Center for leader training meetings during winter months.

The basement, but not the food service portion of the building, has been built. Only when the building is completed will it be possible to use the full capacity of the Center.

It has been four years since county quotas were assigned,

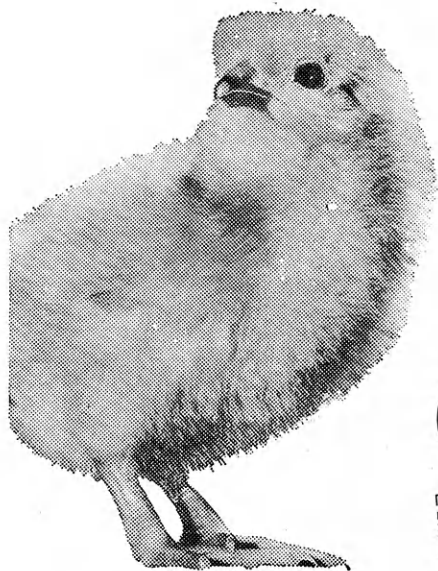
based on that county's use of the Center. Thirty-six counties have raised their quotas in full; all but two have met at least part. However, less than half the total quota has been raised.

Construction costs have raised considerably since these quotas were made. If counties could meet their quotas promptly, further increased costs of construction could be prevented. It is not anticipated counties will be asked to increase their contributions, but if the dining hall is not constructed soon there will be serious financing problems.

## Dining Hall Progress Report

County	Goal	Percent Contrib'd to Mar. 1, 1960		Amount Contrib'd Last 12 Months		County	Goal	Percent Contrib'd to Mar. 1, 1960		Amount Contrib'd Last 12 Months
		1960	Months					1960	Months	
Allen	\$1,890	75				Linn	1,260	72		\$316.95
Anderson	2,070	42		\$ 442.94		Logan	855	2		
Atchison	1,845	77				Lyon	3,285	22		80.00
Barber	225	100				McPherson	2,340	14		101.00
Barton	1,170	69				Marion	2,745	56		342.27
Bourbon	315	84				Marshall	2,520	46		
Brown	315	102				Meade	315	—		
Butler	4,275	44		363.29		Miami	1,755	91		100.00
Chase	1,980	5				Mitchell	2,430	24		87.00
Chautauqua	225	44				Montgomery	270	103		
Cherokee	225	100				Morris	1,800	27		98.00
Cheyenne	1,350	67		708.00		Morton	135	56		75.00
Clark	180	110		84.00		Nemaha	2,115	29		40.00
Clay	3,285	30		18.50		Neosho	2,025	8		110.00
Cloud	2,070	17		45.00		Ness	90	139		
Coffey	3,015	79		1,176.26		Norton	1,395	51		
Comanche	270	100		170.00		Osage	2,655	19		198.00
Cowley	2,340	62		10.00		Osborne	1,485	21		156.45
Crawford	270	100				Ottawa	1,980	10		50.58
Decatur	1,125	43				Pawnee	810	100		
Dickinson	4,365	12		25.00		Phillips	1,080	19		46.00
Doniphan	270	100				Pottawatomie	1,215	33		110.00
Douglas	2,150	40		31.00		Pratt	360	100		
Edwards	1,395	26		144.45		Rawlins	900	61		
Elk	180	100				Reno	4,950	24		234.80
Ellis	720	34		20.00		Republic	1,800	38		32.48
Ellsworth	765	47		12.20		Rice	3,285	15		397.00
Finney	405	100				Riley	3,780	37		217.00
Ford	315	112				Rooks	1,170	69		262.30
Franklin	1,980	29		25.00		Rush	630	100		353.17
Geary	4,185	100				Russell	855	102		449.00
Gove	855	21				Saline	5,085	3		94.00
Graham	1,350	32				Scott	270	100		
Grant	225	100				Sedgwick	10,440	17		629.00
Gray	135	100				Seward	315	100		
Greeley	225	100				Shawnee	5,175	91		365.00
Greenwood	2,160	100				Sheridan	810	100		
Hamilton	225	100				Sherman	2,205	3		5.00
Harper	180	125		9.00		Smith	2,070	3		
Harvey	2,790	16		5.00		Stafford	675	108		
Haskell	180	111				Stanton				
Hodgeman	180	114				Stevens	270	54		
Jackson	1,215	100				Sumner	1,620	81		312.50
Jefferson	3,060	85		1,340.00		Thomas	855	18		
Jewell	1,530	—				Trego	405	62		125.00
Johnson	2,250	84		304.18		Wabaunsee	990	38		
Kearny	180	125				Wallace	855	12		
Kingman	675	88		10.00		Washington	2,475	17		65.00
Kiowa	315	100				Wichita	270	100		
Labette	180	122				Wilson	1,890	5		5.00
Lane	180	111				Woodson	990	53		500.00
Leavenworth	1,800	27				Wyandotte	1,800	100		651.00
Lincoln	1,485	44		439.50						

Give these "babies" the best chance to **live**  
to **grow**  
at **lower**  
**cost**



## chick & pullet program



- Built-In High Livability
- Proved Fast-Growth Nutrients
- Farm-Tested Efficiency

CO-OP CHICK FEEDING PROGRAM		
Age of Birds	Feed to Use	Amount Required per Bird
0- 5 weeks	Chick Pre-Starter Complete	2 pounds
6-10 weeks	Chick Starter-Grower	5-6 pounds
11-20 weeks	Pullet Grower Complete	Light breeds—10 lbs. Heavy breeds—12 lbs.
	or	
11-20 weeks	Pullet Grower Supplement	Light breeds—5 lbs. grain and 5 lbs. Supp. Heavy breeds—6 lbs. grain and 6 lbs. Supp.

Available at Your

**CCA Member Cooperative**



**CONSUMERS COOPERATIVE  
ASSOCIATION**

KANSAS CITY, MISSOURI



Making cardboard stairs for a window display "clutered stairsteps are safety hazards" are Raylene Scott and Earlene Mackfessel, members of the Rozel Hustlers safety team.

## Club Make

When the Rozel Hustlers of Pawnee county started their safety campaign a couple of years ago, it wasn't long before the entire community became safety conscious. They've remained that way ever since.

The Hustlers checked 76 farms in their area for safety hazards, rechecking them two weeks later for corrected hazards. Club members posted 150 "No Smoking" signs.

Raylene Scott and Nelda Rae Ford, Rozel Hustlers Club, Pawnee county, display a "hazards found of farm tour" chart they made to report their farm and home hazards found and corrected.







A "Hillbilly Family" is giving "safety first" skits during the safety campaign of the Rozel Hustlers 4-H Club, Pawnee County. Members of the cast are Nelda and Edward Ford, Earlene Meckfessel, Raylene Scott, Elaine Meckfessel, Treva, Twila and Arlyn Scott.

# entire Community Safety Conscious

Another phase of their safety program was presenting safety programs. The Club gave more than 16 different programs to local clubs and organizations. The programs consisted of skits, illustrated charts, talks, demonstrations and panel discussions with safety as the theme.

Signs with the slogan "No car is safer than its driver"

were furnished by the Pawnee County Farm Bureau and placed by the members on automobiles.

Mrs. Ed McGinty, Pawnee county health nurse, spoke on first aid at a regular club meeting. She gave first aid handbooks to the 4-H members.

The Club's booth at the county fair emphasized safety. A number of window displays were

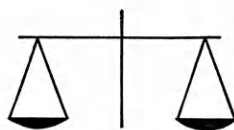
put in merchants windows. "Safety slogan" posters were emphasized one week.

A scrapbook was kept of the newspaper clippings (60 in all), an outline of each program given, a record of all farm homes visited, hazards found, hazards corrected, photos of the team working, a group photo and a story of the project.

## Symbols of America's Strength...



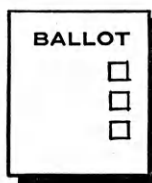
DEFENSE



JUSTICE



FAITH



EDUCATION



**Folger Coffee Co.**

KANSAS CITY  
MISSOURI

SEE YOUR DERBY DEALER  
TODAY FOR ALL NEW ...

STAR



- FASTER STARTS IN COLD WEATHER
- IMPROVED HORSEPOWER
- INCREASED GAS MILEAGE
- NO MORE STALLING
- BETTER ACCELERATION

DERBY GASOLINE WITH STAR\*  
TANE WORKS WONDERS IN THE  
FUEL SYSTEM OF YOUR CAR. IT  
CLEANS CARBURETORS, PREVENTS  
ICING, AND STOPS CORROSION.

When you use Derby gasoline with  
STAR\*TANE your engine will start  
faster, deliver more horsepower, ac-  
celerate faster, claim more miles per  
gallon, and won't fail because of  
icing. Receive maximum perform-  
ance from your car, new or old. Buy  
Derby gasoline, regular or premium,  
today. Both have all-new STAR\*  
TANE . . . and there's no extra cost.

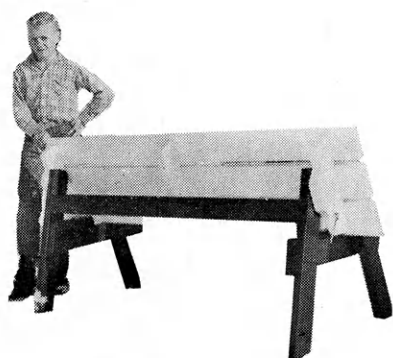
TANE

COMBINES ANTI-ICE, ANTI-RUST AND DETERGENT IN ALL DERBY GASOLINES



# FREE!!

## New Woodworking Plans



PICNIC TABLE (half of it shown here) which folds up to make a bench. Made by Michael Riggs of the Pleasant Valley Club, Cowley county. His mother and younger sister are also pictured.



AUTOMATIC BIRD FEEDER made by Jim Hughes, Enterprise Club, Sedgwick county.

YARD CART for summer picnics and refreshments made by Steve Stucky, Galesburg Club, Kingman county, pictured here with his father as they enjoy some cool refreshments.



===== *Plans for These Items Are*  
===== *Available At The Listed Lumber*  
*Dealers. Ask For Them.* =====

For other FREE 4-H woodworking plans, see the next pages.

# Always on hand...

## YOUR LUMBERMAN

is your best friend when  
you need good material

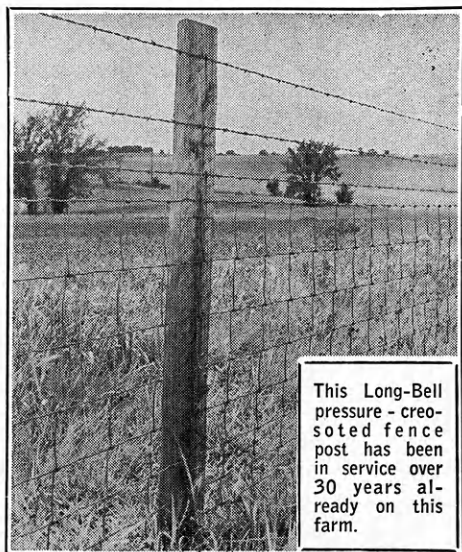


- |   |  |   |
|---|--|---|
| <b>Abilene</b><br>Central Lumber Company                          | <b>Hardman Lumber and Coal Company</b><br>Hess Lumber Company  | <b>Hartford</b><br>Thomas Lumber Company                              |
| <b>Agra</b><br>Agra Lumber Company                                | <b>Coldwater</b><br>Gilchrist Lumber Company                   | <b>Hays</b><br>Hardman Lumber Corporation, Inc.                       |
| <b>Albert</b><br>Albert Lumber-Hardware and<br>Appliance Company  | <b>Home Lumber and Supply Co.</b>                              | <b>Healy</b><br>Healy Co-op Elevator Company                          |
| <b>Alma</b><br>Wolgast & Haefke Lumber Company                    | <b>Concordia</b><br>Leidigh Lumber Company                     | <b>Hesston</b><br>Kropf Lumber Company                                |
| <b>Almena</b><br>Foster Lumber Company                            | <b>Sanborn Lumber Co.</b>                                      | <b>Highland</b><br>Highland Lumber Company                            |
| <b>Alta Vista</b><br>Wolgast Lumber Company                       | <b>DeSoto</b><br>DeSoto Lumber Company                         | <b>Hill City</b><br>Farmers Lumber Company                            |
| <b>Altamont</b><br>Farmers Co-op Elevator Company                 | <b>Denison</b><br>Denison Lumber and Hardware<br>Company       | <b>Hardman Lumber Company</b>   |
| <b>Alton</b><br>Alton Lumber and Coal Company                     | <b>Denton</b><br>C. H. Gish Company                            | <b>Hillsboro</b><br>Hillsboro Lumber Company                          |
| <b>Arma</b><br>Bosinio Lumber Yard                                | <b>Devon</b><br>Devon Lumber Company                           | <b>Hoisington</b><br>Foster Lumber Company                            |
| <b>Anthony</b><br>Rock Island Lumber Company                      | <b>Dodge City</b><br>The T. M. Deal Lumber Company             | <b>Holton</b><br>Brown-Hedge Lumber Company                           |
| <b>Arkansas City</b><br>Central Lumber Company                    | <b>Downs</b><br>Central Lumber Company                         | <b>Holton Lumber Company</b>  |
| <b>Comley-Neff Lumber Company</b>                                 | <b>Edgerton</b><br>Edgerton Lumber Company                     | <b>Holyrood</b><br>Home Lumber and Supply Co.                         |
| <b>Asherville</b><br>Asherville Lumber and Coal Company           | <b>Edna</b><br>The McCoy Lumber Company                        | <b>Home</b><br>M. H. Kramme Lumber and Hardware                       |
| <b>Ashland</b><br>Don Spotts Lumber Company                       | <b>El Dorado</b><br>Home Lumber Company                        | <b>Hope</b><br>Roehrman Lumber and Hardware                           |
| <b>Home Lumber and Supply Co.</b>                                 | <b>Elkhart</b><br>The Star Lumber Company                      | <b>Horton</b><br>Horton Lumber Company, Inc.                          |
| <b>Atchison</b><br>Hixon Lumber Company                           | <b>Ellis</b><br>Golden Belt Co-op Assn., Inc.                  | <b>Hoxie</b><br>Foster Lumber Company                                 |
| <b>Attica</b><br>Crowell Lumber Company                           | <b>Emporia</b><br>Home Lumber and Supply Co.                   | <b>Hugoton</b><br>The Star Lumber Company                             |
| <b>Atwood</b><br>Atwood Lumber Company                            | <b>Kansas Lumber Company</b>                                   | <b>Humboldt</b><br>Barfoot Lumber Company                             |
| <b>Foster Lumber Company</b>                                      | <b>The Smith Lumber Company</b>                                | <b>Hutchinson</b><br>F. E. Perry Lumber Company                       |
| <b>Niswonger Hay, Grain and Lumber<br/>Company</b>                | <b>Erie</b><br>Howard Bros. Lumber Company                     | <b>The Fair-Detter Lumber Company</b>                                 |
| <b>Basehor</b><br>Basehor Lumber Company                          | <b>Eskridge</b><br>Clinton L. Scott Lumber Company             | <b>George Stuckey Lumber</b>  |
| <b>Bazine</b><br>Humburg's  | <b>Eudora</b><br>Eudora Lumber Company                         | <b>Inman</b><br>Inman Lumber Company                                  |
| <b>Beloit</b><br>Beloit Lumber Company                            | <b>Eureka</b><br>A. C. Houston Lumber Company                  | <b>Independence</b><br>Rock Island Lumber Company                     |
| <b>Murray Lumber Company</b>                                      | <b>Everest</b><br>Alexander Lumber Company                     | <b>Iola</b><br>Klein Lumber Company                                   |
| <b>Peoples Lumber and Coal Company</b>                            | <b>Fowler</b><br>The T. M. Deal Lumber Company, Inc.           | <b>Jennings</b><br>Foster Lumber Company                              |
| <b>Bern</b><br>Bern Lumber Company                                | <b>Frankfort</b><br>Andrew Johnson and Son                     | <b>Jetmore</b><br>Foster Lumber Company                               |
| <b>Bird City</b><br>The Bird City Equity Mercantile<br>Exchange   | <b>Searle and Chapin Lumber Company</b>                        | <b>Johnson</b><br>Seyb-Tucker Lumber and Implement<br>Company         |
| <b>Griffin Lumber Company</b>                                     | <b>Fredonia</b><br>The Home Lumber and Supply<br>Company, Inc. | <b>Junction City</b><br>Home Lumber Company                           |
| <b>Bison</b><br>Humburg Lumber Company, Inc.                      | <b>Garden City</b><br>Ed Porter Lumber Company                 | <b>Rock Island Lumber Company</b>                                     |
| <b>Bonner Springs</b><br>Bonner Springs Lumber Company            | <b>Garden Plain</b><br>Fisher Lumber Company                   | <b>Kansas City</b><br>Logan-Moore Lumber Company                      |
| <b>Brownell</b><br>Richolson Lumber and Hardware<br>Company, Inc. | <b>Gardner</b><br>Gardner Lumber Company                       | <b>Kensington</b><br>The Golden Belt Lumber Company                   |
| <b>Bucyrus</b><br>The Blaker Lumber and Grain Company             | <b>Garnett</b><br>Star Grain and Lumber                        | <b>Kinsley</b><br>Kinsley Co-op Exchange Lumber Yard                  |
| <b>Buhler</b><br>Buhler Lumber Inc.                               | <b>Gaylord</b><br>Hardman Lumber Company                       | <b>Home Lumber and Supply Co.</b>                                     |
| <b>Burlingame</b><br>Burlingame Lumber Company                    | <b>Glascio</b><br>The Golden Belt Lumber Company               | <b>LaCrosse</b><br>Wilhelm Lumber Company                             |
| <b>Burr Oak</b><br>Burr Oak Lumber and Coal Company               | <b>Glen Elder</b><br>Dickinson Lumber Company                  | <b>LaCygne</b><br>Blaker Lumber and Grain Company                     |
| <b>Burrton</b><br>Harris Lumber Company                           | <b>Goodland</b><br>Foster Lumber Company                       | <b>LaHarpe</b><br>Blaker Lumber and Grain Company                     |
| <b>Caldwell</b><br>Antrim Lumber Company                          | <b>Hardman Lumber Company</b>                                  | <b>Lakin</b><br>Hart and Company                                      |
| <b>Cawker City</b><br>Cawker City Lumber Company                  | <b>Rasure Lumber Company</b>                                   | <b>Lakin Lumber Company, Inc.</b>                                     |
| <b>Chanute</b><br>Smith Lumber Company                            | <b>Gorham</b><br>Russell Lumber Company                        | <b>Lancaster</b><br>T. E. Snowden Lumber Company                      |
| <b>Chapman</b><br>Sanborn Lumber Company                          | <b>Great Bend</b><br>Everitt Lumber Company                    | <b>Lansing</b><br>International Paper Company, Long-<br>Bell Division |
| <b>Cimarron</b><br>Anawalt-Campbell Mercantile Company            | <b>Foster Lumber Company</b>                                   | <b>Larned</b><br>Antrim Lumber Company                                |
| <b>Wilson Lumber Company, Inc.</b>                                | <b>Rock Island Lumber Company</b>                              | <b>Clutter-Lindas Lumber Company</b>                                  |
| <b>Clay Center</b><br>Kansas Lumber Company                       | <b>Whitesell Lumber Company</b>                                | <b>Lawrence</b><br>Logan-Moore Lumber Company                         |
| <b>Clayton</b><br>Clayton Lumber Company                          | <b>Home Lumber and Supply Co.</b>                              | <b>Woods Lumber Company</b>   |
| <b>Coffeyville</b><br>The Home Lumber and Supply<br>Company, Inc. | <b>Grainfield</b><br>The Golden Belt Lumber Company            | <b>Lebanon</b><br>Lebanon Lumber Company                              |
| <b>Kansas Lumber Company</b>                                      | <b>Grinnell</b><br>The Golden Belt Lumber Company              | <b>Lenexa</b><br>Lenexa Lumber Company                                |
| <b>Colby</b><br>Foster Lumber Company                             | <b>Halstead</b><br>Harris Lumber Company                       | <b>Lenora</b><br>Lenora Lumber Company                                |
|   | <b>Harper</b><br>Rock Island Lumber Company                    | <b>Leoti</b><br>Foster Lumber Company                                 |



THE lumber dealers listed on these two pages are supporting the 4-H woodworking project with this information and free woodworking plans. Get your plans from them.

- Liberal**  
The Star Lumber Company
- Lincoln**  
Leidigh and Havens Lumber Company  
Nitsch Lumber and Supply Company
- Lindsborg**  
Carlson Lumber Yard
- Little River**  
The T. M. Deal Lumber Company, Inc.
- Logan**  
The Hansen Lumber Company  
Logan Lumber Company
- Longford**  
Longford Lumber & Grain Co.
- Louisburg**  
Louisburg Lumber Company
- Lyons**  
Foster Lumber Company
- Macksville**  
Home Lumber and Supply Co.
- Manhattan**  
The Golden Belt Lumber Company  
Griffith Lumber Company  
Kansas Lumber Company  
Ramey Brothers
- Marysville**  
Foster Lumber Company
- Matfield Green**  
Paul Bell Hardware-Lumber-Feed
- McPherson**  
Deal Lumber Company, Inc.  
Lake Superior Lumber Company  
McPherson Lumber Company
- Meade**  
Home Lumber and Supply Co.
- Medicine Lodge**  
P. M. Doherty Lumber Company
- Minneapolis**  
The T. M. Deal Lumber Company, Inc.
- Moundridge**  
Clayton Vogt Lumber Co., Inc.
- Neodesha**  
O. E. Woods Lumber Company
- Ness City**  
Rock Island Lumber Company
- Nickerson**  
The D. J. Fair Lumber Company
- Norton**  
Foster Lumber Company  
Newbury Lumber Company  
Norton Lumber Company
- Nortonville**  
Alexander Lumber Company
- Norwich**  
H. S. Eshnaur & Sons
- Oakley**  
The Golden Belt Lumber Company  
Oakley Lumber Company
- Oberlin**  
Foster Lumber Company
- Offerle**  
Offerle Co-op Grain and Supply Company
- Olathe**  
Cowley Lumber and Hardware Company  
Hodges Brothers
- Osawatimie**  
Leidigh and Havens Lumber Company  
Osawatimie Lumber Company
- Oswego**  
Home Lumber and Supply Co.
- Osborne**  
Lewis A. Hardman Lumber Company
- Ottawa**  
Hubbard Lumber Company, Inc.  
Nuzman Lumber
- Ottawa Lumber Company**
- Overbrook**  
Overbrook Lumber Company
- Overland Park**  
Overland Park Lumber Company
- Paradise**  
Paradise Lumber Company
- Parker**  
Blaker Lumber and Grain Company
- Parsons**  
The Home Lumber and Supply Company, Inc.
- Phillipsburg**  
Hardman Lumber Company  
Home Lumber Company
- Plains**  
Home Lumber and Supply Co.
- Plainville**  
Plainville Lumber Company
- Pleasanton**  
Blaker Lumber and Grain Company
- Pomona**  
Pomona Lumber Company
- Pratt**  
W. R. Green Lumber Company  
The Ortmeyer Lumber Company
- Prescott**  
Prescott Lumber Company
- Pretty Prairie**  
The George W. Ulch Lumber Company
- Protection**  
Home Lumber and Supply Co.
- Riley**  
Alexander Lumber Company
- Russell**  
Hardman Lumber Company of Russell Inc.
- Sabetha**  
Farmers and Merchants Lumber
- St. Francis**  
Foster Lumber Company  
St. Francis Equity Exchange
- St. Marys**  
St. Marys Lumber Company
- St. John**  
Home Lumber and Supply Co.
- Salina**  
E. D. Bishop Lumber Company  
Larson Lumber Company, Inc.  
Leidigh and Havens Lumber Company  
Michaelsen Lumber Company
- Satanta**  
The T. M. Deal Lumber Company, Inc.
- Scott City**  
Foster Lumber Company
- Selden**  
Foster Lumber Company
- Seneca**  
Koelzer Lumber Company  
Seneca Lumber Company
- Severy**  
Tolman-Gibbon Lumber Company
- Silver Lake**  
J. Thomas Lumber Company
- Sharon Springs**  
Foster Lumber Company
- Smith Center**  
Mid-West Lumber Company  
Smith Center Lumber Company
- Spring Hill**  
Spring Hill Lumber Company
- Stafford**  
The T. M. Deal Lumber Co., Inc.  
Home Lumber and Supply Co.
- Stanley**  
Stanley Lumber Company
- Sterling**  
The D. J. Fair Lumber Company
- Stockton**  
The Golden Belt Lumber Company  
Stockton Lumber Company
- Strawn**  
Kansas Soya Products Company, Inc.
- Sublette**  
The T. M. Deal Lumber Company, Inc.
- Summerfield**  
Meyer Lumber and Hardware
- Syracuse**  
Foster Lumber Company
- Sylvia**  
The D. J. Fair Lumber Company
- Talmage**  
Talmage Lumber and Hardware Company
- Tipton**  
Tipton Lumber Company
- Topeka**  
Whelan Lumber Company  
Main Store, 715 E. 4th  
Pauline Branch at Pauline  
Highland Crest Branch, 200 E. 29th  
Seabrook Branch, 2019 Gage
- Tribune**  
Foster Lumber Company
- Ulysses**  
The T. M. Deal Lumber Company, Inc.
- Victoria**  
The Golden Belt Lumber Company
- Wakarusa**  
Hardman Builders Supply Company
- Wakefield**  
Sanborn Lumber Company
- Wathena**  
Farmers Grain and Lumber Company
- Waverly**  
Star Grain and Lumber Co.
- Wellington**  
Antrim Lumber Company  
Wellington Lumber and Supply Company, Inc.
- Wellsville**  
Star Grain and Lumber Company
- Wetmore**  
Wetmore Lumber Company
- White Cloud**  
White Cloud Lumber Company
- Wichita**  
Farm Cash Lumber Company  
Lawrence Lumber Company  
Rock Island Lumber Company  
Stockyards Cash and Carry Lumber Co.
- Wilson**  
Hoch Lumber Company  
Wilson Lumber Company
- Winfield**  
Deal Lumber and Hardware Company, Inc.  
A. B. Everly Lumber Company  
Thompson Lumber Company
- Winona**  
The Golden Belt Lumber Company
- Woodbine**  
Kohler Lumber Company
- Yates Center**  
F. H. Conger and Son
- Zenda**  
The George W. Ulch Lumber Company  
Missouri
- Kansas City**  
The George W. Ulch Lumber Company, 11432 Truman Road



This Long-Bell pressure-treated post has been in service over 30 years already on this farm.

## FENCE FOR YOUR FUTURE WITH "Long-Bell" Time Tested Posts

Long-Bell pressure-treated posts are the finest that can be bought. Made by the first company to commercially distribute this lifetime product and sold under a 35-year service replacement policy, they are still the choice of farmers everywhere who buy performance-tested products.

INTERNATIONAL PAPER CO.  
**Long-Bell**  
WOOD PRESERVING DIVISION  
KANSAS CITY, MISSOURI

FOR "LONG-BELL" PRESSURE-TREATED PRODUCTS SEE YOUR RETAIL LUMBER DEALER.

# ur 4-H Woodworking Project

story

so tough, shock resistant elastic as hickory. It is especially desirable for short handles.

handles it is a popular choice for trailers and truck beds and for lawn furniture.

ple

heavy, hard, strong, and works well.

high polish and is very common in houses as well as in gymnasiums, etc. It is used for musical instruments, bread boards and rounded products.

Oak

Especially desirable for, of course, because it is so easy to treat with creosote. It is used for flooring, furniture, millwork.

the Oak

Especially noted for floor-boards, sometimes makes it stronger than is red oak. It is used for furniture, boxes and crates.

## Walnut

Walnut wood is the favorite for gun stocks because of its beauty and shock-resisting quality. It is a heavy, strong and stiff wood, moderately hard. It is very durable.

Because it is easy to work with and because it finishes beautifully, walnut is used largely for furniture and cabinets.

## Western Red Cedar

Nearly all of the wooden shingles in the U. S. are made from Western Red Cedar lumber. The wood has very few defects, a straight grain and lasts for a long time under adverse weather conditions.

In addition to shingles, it is used for lumber, poles, posts and piling. It is good for outdoor siding, interior finish and structural timbers. Western Red Cedar makes a good wood with which to build a boat.

## Cypress

Extremely water resistant, cypress is also very strong and hard. It is very well suited for use outdoors. Thus, it makes good flower boxes, fence posts, poles, shingles, beams, etc.

## Douglas Fir

Douglas fir is one of the hardest, heaviest, stiffest and strongest of the native softwoods. It is used in great quantities

in home building, bridges, wharf construction and heavy construction of all kinds. It is also used for flooring, furniture, sashes and doors.

## Northern White Pine

Soft textured, fine and light, northern white pine has a wide variety of uses. It is light in weight, easy to handle, easy to stencil and easy to nail. Most of the northern white pine lumber is used for boxes. Other uses include sashes, doors, finish, trim, row boats, etc.

## Ponderosa Pine

Ponderosa is suitable for so many things it is easier to name those things for which it is not suited than those for which it is suited. This wood is uniform in texture, soft and moderately strong. It is used principally for lumber—rough textured wood being used for rough construction and the finer textured woods used for sashes, doors, blinds, mantels and built in cases and cabinets. It is also used for sub-flooring, boxes and crates.

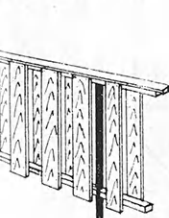
Get Your  
**FREE 4-H WOODWORKING**  
Plans from any of  
These Lumber Yards

# Excellent 4-H Woodworking Projects

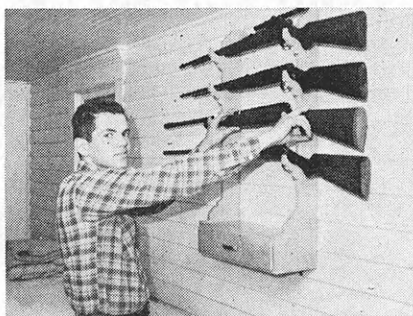
Available at Lumber Yards

Joining Pages

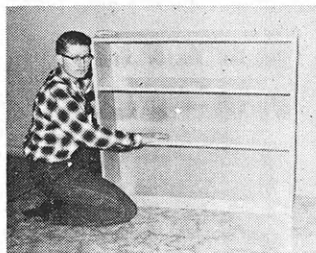
HARD FENCE



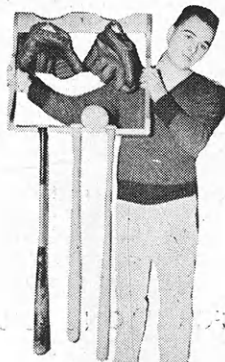
HANDY GUN RACK



BOOK CASE



BILL'S BASEBALL RACK





# Use the Right Wood for You

Did you ever wonder what kind of wood to use in making certain objects? Wonder no longer. Below is a brief description of each of the most popular woods available at most lumber yards. Also indicated are a few of the items made from the wood.

You may find this information useful for an illustrated talk or for use in making your summer's woodworking projects. For more details ask your local lumber dealer.

## White Ash

White ash is a very common hardwood. It is a very tough wood which is used for such sporting equipment as baseball bats, boat oars and snowshoes. It is also used for long tool and implement handles, furniture, motor vehicle parts and for veneer for plywood and furniture.

The wood of ash is divided into two texture types—one used for cabinet work and the tough-textured ash used for those items which require a great deal of strength.



Get Your  
**FREE 4-H WOODWORKING**  
Plans from any of  
These Lumber Yards

## Beech

Beech is a very heavy and hard wood, moderately stiff and shock resistant. It has excellent wearing qualities making it an excellent wood for flooring. Because it does not impart a taste to items with which it comes in contact, it is used for wooden dishes. It is also suitable for lumber, chairs, woodenware, rolling pins, spools and toys.

History records that beech wood was used for writing tablets before paper came into general use.

## Birch

One of the first American uses for birch was for canoes. Today it is used for lumber, furniture, interior finishes and doors. Your mother may have birch cabinets in her kitchen. Birch may be varnished and polished to a very beautiful finish.

## Red Gum

More red gum is made into furniture than any other wood. The heart of the red gum tree has a lustrous, satin-like appearance which is highly prized by cabinet makers.

In addition to furniture of all types, red gum is used in boxes and crates, cabinets, interior trim, millwork and as a veneer for plywood panels used for interior woodwork.

## Hickory

No other wood is as resistant and yet is as tough. These qualities make it suitable for axe and other handles.

In addition to handles, hickory wood is used for making wagon wheels and other bodies. It is also used for

## Maple

Hard maple is a very stiff and resists shock.

Maple takes a high polish and is desirable for flooring. It is used in bowling alleys, gym floors, and also used for furniture, cabinets, butcher blocks, and many turned and rounded items.

## Red Oak

Red Oak is especially strong and is easy to work. It is also good for boxes, handles and many other items.

## White Oak

White oak is especially strong. Its light color makes it more popular for flooring. It may also be used for general millwork.

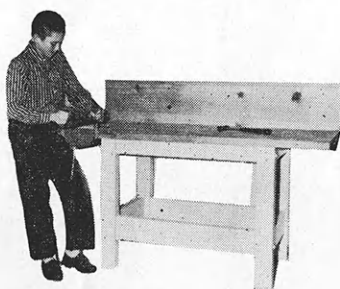
## These Items Would Make Excellent Gifts

Ask For Free Plans Available at Lumber Yards Listed on Advertisements

CHRISTMAS TREE GIFTS



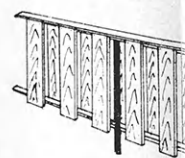
SIMPLE WORK BENCH



COFFEE TABLE



A BACK YARD





Left, Marsha Anderson models a blue and white checked gingham with lace trim and laced bodice insert. It's ideal for school and can be worn to church. Right, Marsha wears a navy blue dressy silk and cotton blend for



church. It has a big white organdy collar. She carries a navy blue clutch bag.

# Ideas for Your 4-H Projects In These New Spring Fashions

See something you'd like to make? These Stevens county girls are modeling some of the new spring fashions furnished for the occasion by Shoppe Elite of Hugoton.

Spring, 1960, fashions for Mi-

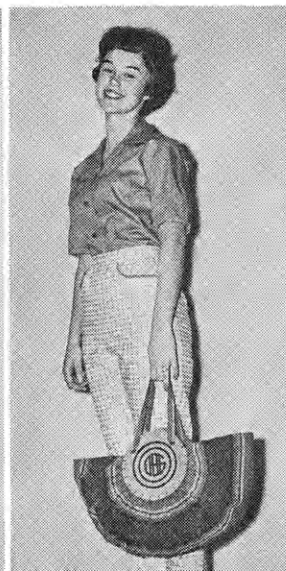
lady stresses femininity. There is emphasis on soft lines, natural curves and featherweight fabrics.

Sleeves stand out as the biggest change in this year's dresses. Big sleeves provide ease and upper width in 1960.

Waistlines mark the normal position instead of last year's highwaisted effect. Lowered waistlines, either in fitted long torso bodices or shallow hip yokes in fullskirted dresses are a trend to watch in the future.

Left below, Joyce Timmons, 1959 Kansas style revue winner, is wearing a two piece dress with a slim skirt in a washable drip-dry cotton. The pattern is a small brown and white check. All added attraction is the removable white bib. With the bib you have a dressy cotton for church, remove it and you are ready to go shopping. Right, center, Marilyn Smith wears an outdoor ensemble consisting of a brass colored skirt with roll up sleeves in a wrinkle resistant cotton. Her slim-jims are 100% cotton

sharkskin, an easy living fabric and fully washable. Extreme right, Marilyn's dress is an all combed sheer cotton, washable and drip-dry. With hat, gloves and jewelry it's good for graduation, church or afternoon tea. Skipping the hat but adding a sweater makes it very nice for that special date. Cool and airy, the full skirt has vertical tucks and contrasting lavender lace trim on the bodice and skirt, very short sleeves, V-neckline and a deep hemline.



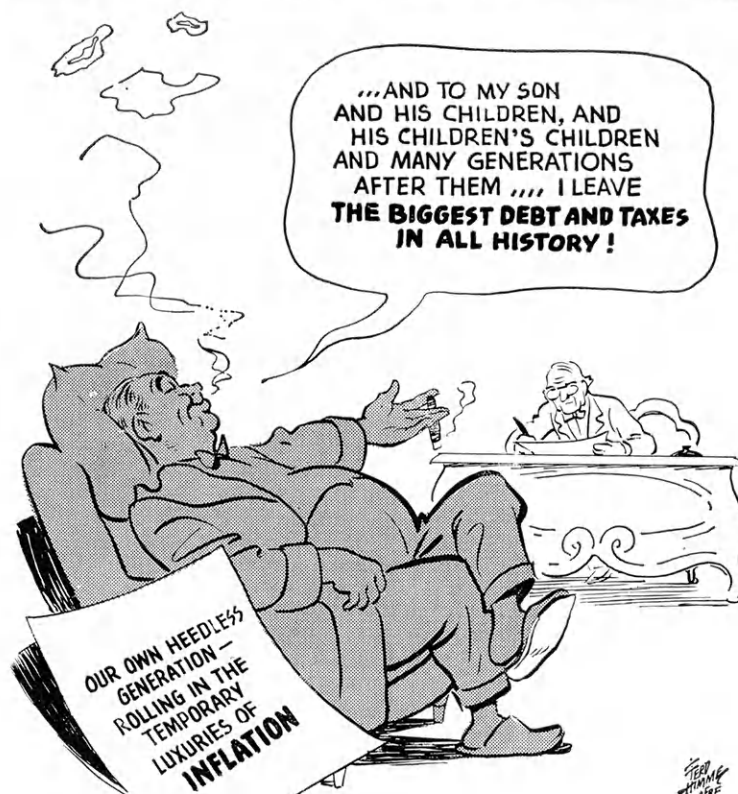




Above, Joyce Timmons wears a navy blue silk shantung double breasted dress with large white pearl buttons. She is wearing a navy blue straw hat with white trim, navy shoes, white gloves and beads and carries a navy purse. Her coat is a short white wool and cashmere blend. Below, the same dress without the coat and wearing a white hat. Neighbor girl Debbie Anderson is ready to go to church with Joyce in the picture below. Debbie is in a pink cotton and silk blend with puff sleeves. It has a double collar with white lace trim and two large tucks at the bottom with white lace trim.



## HERITAGE FOR FUTURE GENERATIONS...



Although you've left 1959 behind forever, you'll carry one of its problems into the new year.

That's your share of the total government debt. A research organization estimates that each of us "owes" \$2,007 on account of total gross government debt—figured as of the end of fiscal 1959. That's \$43 more than in 1958 and four times the per capita debt 20 years ago.

We cannot possibly hope to reduce this figure as long as we ask the government for more services and permit Congress to engage in deficit spending on a large scale. Government spending must be paid for—either with taxes or inflation.

This trend toward more and more government spending without regard to income can be stopped—but only if you and the majority of the people demand it.

## Kansas Farm Bureau

105 County Farm Bureaus

Working Together

## Three Keys to Poultry Success

*Management*

*Equipment*

*Feeding*

Poultry has been a very profitable project for Don Williams, Barton county. Good equipment, management and feeding practices have paid off in high egg production from Don's 90 hen flock.

Don started with a building which had been used to house his sheep. He took old doors and scrap sheetrock, lined the sidewalls and put in straw for insulation. He also installed a false ceiling which allows for ventilation through a roof ventilator.

For convenience, and as a time saver, Don built six feed bins across one side of the building. The bins hold 800 pounds of egg producer mash, 21 bushels oats and 20 bushels milo.

Since Don believes there are not enough daylight hours for the hens to work, he wired the hen house with two 60 watt bulbs and attached an alarm clock to the light switch. At 3:30 A.M. the alarm goes off and lights come on to start a busy day for the hens. In the evening the hens



Don Williams, Barton county, gathers eggs from nests he built for his poultry project.

are allowed to go to roost when the sun goes down.

Eggs are gathered three times a day, cleaned and put in a cool place until they are marketed to individual customers daily.

In cold weather Don has a kerosene burner under the waterer. Thus, the water never freezes and the hens have water all the time. They are fed a mixed balanced ration of mash, oats and milo.

Don lives in town so is limited for space and can accommodate only about 90 hens. He also raises broilers, capons and his replacement flock.

## *low-cost insurance for careful drivers...*

**CAREFUL DRIVERS HELP STATE FARM KEEP RATES AT ROCK-BOTTOM** This emblem is the symbol of State Farm Mutual. The company that aims to insure only "Careful Drivers"... drivers who have fewer, less costly accidents. Savings here and on economies in operations have helped us maintain rock-bottom rates for policyholders. Call soon for the complete story.



**STATE FARM MUTUAL  
AUTOMOBILE INSURANCE COMPANY**

Home Office: Bloomington, Illinois



- **ROCK-BOTTOM RATES**
- **HOMETOWN SERVICE**
- **BANK PLAN FOR AUTO FINANCING**
- **OVER 7500 AGENTS**
- **WORLD'S LARGEST AUTO INSURANCE COMPANY**



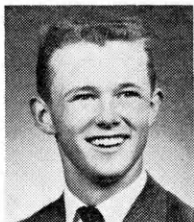


## Four Delegates to Natl. Conference

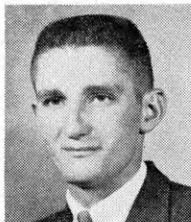
The four Kansas delegates to the National 4-H Conference in Washington, D.C. April 23 to 29 have been announced.

They are Brenda Tjaden, Sedgwick county; Florence Cutter, Stevens; John Roohms, Stafford and Bill New, Leavenworth county.

Delegates are chosen on the basis of their leadership and



John Roohms



Bill New



Brenda Tjaden



Florence Cutter

service in club activities in addition to a varied and outstanding record of individual projects and activities.

The trips for the Kansas delegates are made possible by the Kansas Bankers Association through the Kansas 4-H Foundation.

## 500 4-H Talks!

Lester Weatherwax, Wichita, one of Kansas' most active 4-H boosters, celebrated a milestone in his 4-H career last December.

His talk at the Sedgwick county 4-H achievement was the 500th talk he had made to 4-H groups in the last 20 years.

In addition to his inspirational talks, Mr. Weatherwax is very popular as a song leader. He does much behind the scenes work in promoting various 4-H projects with the business people of the state.

Hats off to Lester Weatherwax!!



**"My steers gained 15% faster when I paved my feedlot with concrete!"**



**Tests prove it, time after time! Steers finished on a concrete feedlot are heavier, healthier, have better appearance, go to market earlier.**

Steers lose weight wallowing around in mud. And when the mud dries up, you've got a dust problem.

That's why more and more feeders are going to concrete for feedlots. Feed gets to cattle in any weather. Steers pack on solid gains *fast* . . . get more out of their feed. They stay healthy, too.

Tractor scoops won't tear up concrete and you can get the whole paving cost back in manure saved. More information? Write for free booklet.

### PORTLAND CEMENT ASSOCIATION

811 Home Savings Building,  
Kansas City 6, Missouri

THE MARK OF A  
MODERN FARM

**concrete**

*A national organization to improve and extend the uses of concrete*



Left, 4-H'ers Sheryle Gooch and Bill Leonard, Stevens county, contribute their services to set out trees and improve the county fair grounds. Twenty to thirty county 4-H'ers turned out for a work day. Right, Sandra



Beal of the Spring Valley Sparklers Club, Cherokee county, was crowned county fair queen at the climax to 4-H activities at the fair. She won her title as the result of her club's selling the most tickets per member.



Nine-year-old DeAnn Gotschall tests her first custard at a Rozel Hustlers foods project meeting, Pawnee county.



As a community service project the KC-OK Club, Wyandotte county, presents boxes of cookies that 4-H members have made to elder citizens of the community. Here Vicki Waugh and Theora Tice present a box to Mrs. Acres whose husband was sick.

Members of the Happy-Go-Lucky Club, Riley county, cooked dinner for and presented a style revue with their mothers as guests. Here two members, Charolette Sand and Judy Benninga, model housecoats they had made.



The grand champion county fair booth of the Cloverleaf Club, Haskell county, featured high-way safety.



## Pictures From Kansas 4-H'ers

### SEND IN YOUR PICTURES

We want pictures taken by Kansas 4-H'ers. Prizes will be given for all pictures used in the Journal.

The picture need not be on 4-H Club work, but pictures with subjects related to 4-H Clubs are preferred. Action pictures are desired.

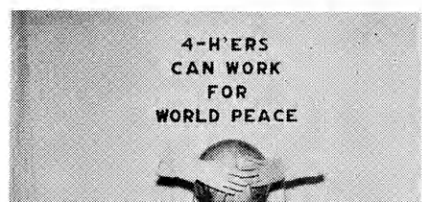
All pictures should be glossy prints at least five by seven inches in size unless accompanied by the negative.

Photographs should be accompanied by a short statement explaining the picture and including the names of persons shown.

Entrants should designate their choice of the following prizes. A year's subscription to the National 4-H Club News, one roll of color film—sizes 620, 120, 616, 116, 127 or 35 mm only, or a 4-H Club photograph album.

4-H members, parents, leaders, county agents or friends of 4-H may send in pictures.

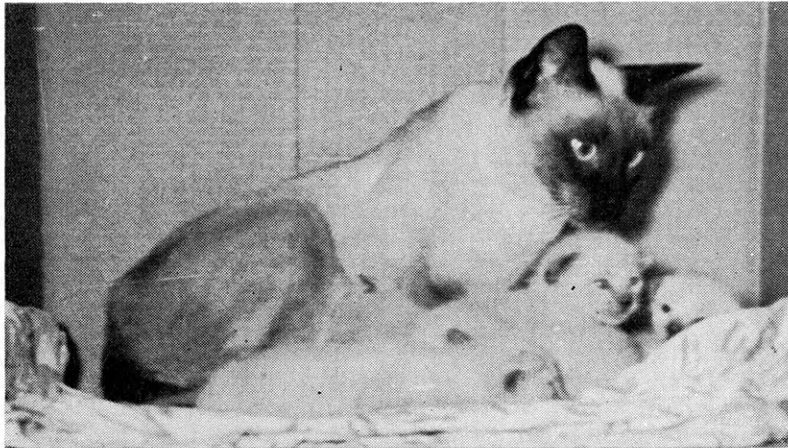
"4-H'ers can work for World Peace through IFYE, pen pals, CARE and CROP" was the message of the top booth at the Lane county fair exhibited by the Spring Creek Eoger Beavers club.





a-a-a-a-a-h-

# SECURITY!



*and* **EVERY ACCOUNT GETS THE SAME PERSONAL ATTENTION**

*Plus* **SAFETY** — insurance up to 70,000 dollars for a family of three

*Plus* **PROFIT** — highest rate consistent with safety

*Plus* **AVAILABILITY** — your funds are always readily available

## SEE YOUR NEAREST *Progressive* **KANSAS** *Savings & Loan Association*

**Arkansas City**  
First Federal Savings and Loan Ass'n of Arkansas City

**Augusta**  
The Commercial Savings and Loan Assn.

**Beloit**  
The Beloit Building and Loan Assn.  
First Federal Savings and Loan Assn. of Beloit

**Chanute**  
The Chanute Building and Loan Assn.

**Clay Center**  
Northwestern Federal Savings and Loan Ass'n. of Clay Center

**Dodge City**  
First Federal Savings and Loan Ass'n. of Dodge City

**El Dorado**  
Eureka Federal Savings and Loan Association  
Mid-Continent Federal Savings and Loan Assn. of El Dorado

**Emporia**  
The Columbia Building and Loan Assn.  
Eureka Federal Savings and Loan Association

**Erie**  
The Erie Savings and Loan Assn.

**Eureka**  
Eureka Federal Savings and Loan Association

**Fort Scott**  
Liberty Savings and Loan Assn.

**Garnett**  
The Garnett Savings and Loan Association

**Goodland**  
Goodland Savings and Loan Assn.

**Great Bend**  
The Prudential Building and Loan Assn.

**Hays**  
The Hays Building and Loan Assn.

**Hutchinson**  
First Federal Savings and Loan Assn. of Hutchinson  
Valley Federal Savings and Loan Assn. of Hutchinson

**Iola**  
The Security Savings and Loan Assn.

**Kansas City**  
Anchor Savings and Loan Assn.

**Kinsley**  
The Kinsley Savings and Loan Assn.

**Larned**  
The Larned Savings and Loan Assn.

**Lawrence**  
Anchor Savings and Loan Assn.  
Capitol Federal Savings and Loan Assn.

**Leavenworth**  
The Leavenworth Mutual Building, Loaning and Savings Assn.

**Liberal**  
First Federal Savings and Loan Assn. of Liberal

**Lyons**  
The Lyons Savings and Loan Assn.

**Medicine Lodge**  
The Barber County Building and Loan Association

**McPherson**  
The Pioneer Savings and Loan Association of McPherson

**Mission**  
Anchor Savings and Loan Assn.  
Capitol Federal Savings and Loan Assn.

**Newton**  
First Federal Savings and Loan Assn. of Newton

**Norton**  
Norton County Savings and Loan Association

**Ottawa**  
Anchor Savings and Loan Assn.  
Ottawa Savings and Loan Assn.

**Overland Park**  
Jayhawk Savings Assn.  
The Overland Park Savings and Loan Assn.

**Parsons**  
First Federal Savings and Loan Assn. of Parsons

**Plainville**  
Rooks County Savings Assn. of Plainville

**Pratt**  
The Western Savings Assn.

**Salina**  
The Homestead Building and Loan Assn.

**Tonganoxie**  
The Tonganoxie Building and Loan Assn.

**Topeka**  
Capitol Federal Savings and Loan Assn. at 6th and Kansas, and 12th and Topeka Blvd.

Postal Savings and Loan Assn.

**Wichita**  
The Commercial Savings and Loan Assn. at 4601 E Douglas, 113 South Main and Boulevard Plaza

**All Accounts in These Savings and Loan Associations**



Insured by the Federal Government

\$10,000 for each account  
\$70,000 for a family of three

# Ideas That Work

*Reporter's Notice: The Kansas 4-H Journal would like to print interesting stories of your local club events, activities, members and leaders. Local club meeting stories, if submitted, should contain something unusual or of interest to people outside your county.*

*Outstanding projects, services or events of your club, or stories of individuals within your club that would give ideas to other 4-H'ers would make excellent stories.*

*Prizes will be awarded all blue award stories each month. Please state your choice (1) a year's subscription to the National 4-H Club News or (2) a hard cover loose leaf 4-H notebook.*

## New Ideas for Tour

"My! I certainly enjoyed the tour, didn't you?" This remark was probably made many times on the annual spring project tour of the Eden Valley Hustlers Club, Stafford county.

The club had chosen up sides to determine which was best prepared for the tour. Project leaders served as judges.

Practically every 4-H'er had prepared a brief but interesting report on the progress of their project. Nine and ten-year old Darryl and Garrold Dunham gave an amazing summary of their fine garden project when they included in their report the name of every variety of

fruit and vegetable in their beautiful garden.

Gary Snyder had an unusual way of displaying his potato project. Since his plot of ground was too far out in the field for the club to see the potatoes in the field, he served new, whole potatoes that had been lusciously seasoned and fried in butter on colorful toothpicks.

Peggy Tanner, Rep.

## Trial Run for Fair

Members and leaders of the Jayhawk Club, Douglas county, hold a trial run for the county fair when they have a little fair of their own several weeks before the county event.

The activities of the fair are widely varied and some follow a pattern similar to the county fair. With baking, loading livestock or doing a hundred and one last minute things, the day generally starts early for the members. Eleven o'clock was the deadline for last year's entries with the judging starting at 1:00 P. M. Other afternoon events included volleyball and badminton games and a watermelon eating contest.

The evening festivities were started by a basket supper at 6:30 P. M. Eats were followed by a livestock parade and regular club meeting.

Linda Hemphill, Rep.

## Letters

(Continued from page 3)

Please, lets yield the right of way to our children and let them grow up step by step as God intended.

Then, they will be ready to be our leaders of tomorrow.

Seems to me we adults are slowly pushing the child forward so we can step out, this to me is stepping backwards. Eventually we will have our babies leading the adult.

Mrs. Orval Smith, Edwardsville

## Address Change Quick

Dear Editor:

We sure want you to have our new address so we won't miss any of your monthly issues. Just by reading what other clubs are doing gives us good ideas. As a result we have a stronger club.

Ours is a new club but we've received a lot of encouragement and we are determined to become a blue ribbon club in every way.

Robert Gordon 4-H Family  
R 3, Madison

## Many Safety Activities

The Cloverleaf Club, Haskell county, has a widely varied group of safety activities to their record. The club won a special certificate of recognition for their 1959 safety program.

Two of the club's six radio programs on Liberal station KSCB were devoted entirely to farm, home, high and community safety. Safety talks and tips were featured on other programs. At each club meeting, safety talks and hints of every kind were given to make individual members safety conscious.

The club's county fair grand champion booth featured "Death Takes No Holiday" and was taken to the State Fair.

Reflector tape was placed on 44 bicycles and each member was to plan a special home or farm safety project. These projects included efforts to make tractors, machinery, homes, stairs, yards, streets kitchens, cars, highways and sidewalks safer places to live and work.

All members of high school age have or are taking driver education.

Patty Winter, Rep.

## Program at Community Meeting

It was 4-H night at the monthly meeting of the Monmouth Township Agricultural Association. The two 4-H Clubs in the township—Berryton and Riverside—presented the program before a crowd of 200 people.

In addition to musical numbers and humorous skits by the members from the two clubs, Judy Meek of the Shawnee county Who's Who Club showed slides of the Club's recent trip through the southern states.

Martha Pufahl, Rep.

## Clean School

Did you ever listen to a group of busy bees in a clover field? That's the way the Ontario Busy Bees Club house in Jackson county sounded before the monthly meeting last summer.

The members arrived with buckets, brooms and rags to clean the schoolhouse. When they had finished dusting benches, cleaning windows and sweeping floors, the monthly meeting began in very clean surroundings.

Le Anne Biggart, Rep.

## Ideas in Brief

"My Hero," a one act farce, won top blue for the Loyal Hustlers Club, **Comanche** county, in the county 4-H Day . . . Community service projects of the Happy Horseshoe Club, **Marshall** county, included selling rat poison, conducting a house to house canvass for the cancer drive, contributing to World Relief, Cancer and March of Dimes, and donating a basket of food to a needy family at Christmas time . . . Northeast Kansas county extension agents have details on a program whereby the Northeast Kan-



sas Guernsey Breeders' association makes available a heifer calf to 4-H members ... The Walnut Club, **Reno** county, has appointed Randy Duft as their historian to keep track of important past events of the club ... A health survey on polio shots is the project of the month for the Haven Club, **Reno** county ... The North Reno club, **Reno** county, cleared \$135 with a chili supper on February 11 ... Mrs. Bonnie Riley gave tips on styles, good grooming and hair dressing at a meeting of the Prosperity Club, **Reno** county ... Seventeen members of the Thomadora Club, **Reno** county, got a heavy dose of good grooming tips at their recent meeting. Members gave project talks on "How to Plan a Wardrobe," "Fibres and Fabrics," and "How to Dress as if Money Were No Object." ... The Thrifty Thrivers Club, **Labette** county, are joining a county-wide campaign to get rid of rats in their community. They will keep bait boxes out for at least two weeks in March ... The Berryton Club, **Shawnee** county, delivered cookies, games and gifts for the Pediatrics Ward at a local hospital at Christmas time ... Special ceremony for the model meeting of the Berryton Club, **Shawnee** county, was a commemoration of the club's 20th birthday ... "Your greatest ambition in life" was roll call for the Huntsville Club, **Reno** county ... Members of the Union Valley Club, **Reno** county, presented a program for the Union Valley PTA March 8 as a part of National 4-H Week. Also during the week the club participated in 4-H Sunday services at the local church and held a box supper as a money raising project ... Members of the Hayes Club, **Reno** county, stressed photography at their meeting February 13 ... Roll call for Ninnescah Club, **Reno** county, was naming the month of their birth and citing an important event occurring during that month ... Riverview Club, **Sedgwick** county, plans a special recognition for members who are, this year, graduating high school seniors ... The Riverview Club, **Sedgwick** county, plans to help make a community park out of a strip of land the Riverview School has recently purchased, if the school board agrees ... Roll call for the Kechi Club, **Sedgwick** county, was giving the name of a state and a capitol ... Twenty-nine of the Smoky Valley Club's thirty-two members were represented in the **Russell** county 4-H Days with a model meeting, four demonstrations, two promotional talks, three activity talks, and three folk game groups ... Water skiing was the favorite answer of members when asked to name their favorite sport at a meeting of the Plum Creek Club, **Cheyenne** county ... The Sitka Hustlers livestock judging team, **Clark** county, won first place honors at the Harry Smith and Son 4-H judging contests at Elkhart March 5 ...

The Paradise Dell Club, **Russell** county had two demonstrations, two activity and one promotional talk, one play, two musical numbers, two square dance entries and one model meeting ... During National 4-H Week the Maize Club, **Sedgwick** county, presented their model meeting and a folk game at a meeting of the Maize Lions Club ... Sammy Warta gave tips on different varieties of grass that can be used to beautify the yard at a meeting of the Arlington Club, **Reno** county, ... "Wink 'em" was a popular game for the recreation part of the Obee Club meeting, **Reno** county ... The Hilltoppers Club, **Harper** county, had a cake walk and program at their February meeting, proceeds to go to the March of Dimes ... Twenty-four of the approximately 100 4-H leaders honored at the **Nemaha** county 4-H Leaders Recognition event had been 4-H leaders for ten years or longer. The 24 had a total of 368 years service. Dean of the group was Mrs. L. L. Swartz of the Rustlers Club with 26 years service ... Junior night was the theme for the Busy Bee Club meeting, **Stevens** county, as the meeting was conducted by the members 13 years of age and younger ... Community service and safety project of the College Hill Club, **Riley** county, was giving safety checks to bicycles at the College Hill School. All bikes were given reflector tape and students instructed in bicycle safety ... The Sunset Club, **Seward** county, is having health cards printed for community citizens. Blood type and other information will be put on the card to aid doctors in case of an accident ... Members of the Cloverleaf Club, **Gove** county, raised \$42.31 for the Grainfield Teens Against Polio March of Dimes campaign by helping with a "sock-hop" and selling crutches ... Members of the Bearcreek Boosters Club, **Clark** county, made \$22 for their club treasury by selling 85 Kansas Centennial license plates ... Members of the Lawnridge Club, **Cheyenne** county, are conducting a letter exchange with a 4-H Club in Australia ... Betty Jean Ramsey told members of the Manning Jayhawkers Club, **Scott** county, that everyone needs a hot meal at least once a day and that meals should be planned to meet all the health needs of the family ... The Lawnridge 4-H members, **Cheyenne** county, took a seven minute trip around the world at their February meeting as Mr. and Mrs. Turk showed slides of their overseas trip ... The Bearcreek Boosters Club, **Clark** county, had nine 4-H Club Day entries with the club band and promotional speaker to go to the Regional 4-H Day. These two numbers will also perform before meetings of three local civic groups.

## WE LEARNED A LOT — AND — GETTING UP THE PROGRAM WAS EASY



I'm Janet Wegman of the Fairview 4-H Club, Sheridan County.

We needed a program for our 4-H club meeting so I asked the folks at the telephone company to furnish us a FREE film. They were happy to do so and this made getting up the program very easy.

We selected a film which made us aware of how vital good telephone service is to our community — but — there are dozens of other films to choose from — films on safety — home decorations—films with good music.

If you need programs for your 4-H club, church or teen-age group, why not do as I did? Just fill out the attached coupon and send for the catalog of FREE films put out by the

## SOUTHWESTERN BELL TELEPHONE CO.

-----  
Area Information Manager  
Southwestern Bell Telephone Co.  
823 Quincy  
Topeka, Kansas

Please send me a free copy of  
your PROGRAMS catalog.

Name .....

Address .....

City .....



Proper lighting for the kitchen sink begins at least six inches above eye level.

## Margaret Sughrue, Finney County, Wins Applause With "Desirable Lighting" Demonstration



Here Margaret uses her sister, Kathleen, to demonstrate the proper location of a table lamp . . . approximately 20 inches right or left of the reading material and 16 inches to the rear of the reading material. The bottom of the shade should be at eye level.

Margaret has given several different electrical demonstrations. But the most requested and enjoyed of her demonstrations is one on "Desirable Lighting," in which she shows the proper height and location of good lighting fixtures for various seeing tasks.

Margaret is specific (see photographs) and authoritative. She draws her information from the latest published standards developed by lighting industry research. To supplement the many tips for good lighting in her demonstration, Margaret recommends a booklet, "See Your Home in a New Light," it is available from most county extension agents and power suppliers.

This demonstration of "Desirable Lighting" has been popular with home demonstration units, and home economics classes as well as 4-H home improvement and electrical project groups.

Margaret is a member of the Up and Atom 4-H Club, Finney County. Her many electric project activities in 1959 earned a place for her among the state's top ten electric project members, and a visit to Wichita last November 6 and 7 for Electric Day sponsored by the Power Suppliers of Kansas.

**WATCH THIS  
PAGE FOR IDEAS  
ON FARM AND  
HOME ELECTRIC  
PROJECTS**

### *Electric Light and Power Companies in Kansas*

The Kansas Power and Light Company

Central Kansas Power Company

Kansas City Power & Light Company

Kansas Gas and Electric Company

Western Light & Telephone Company